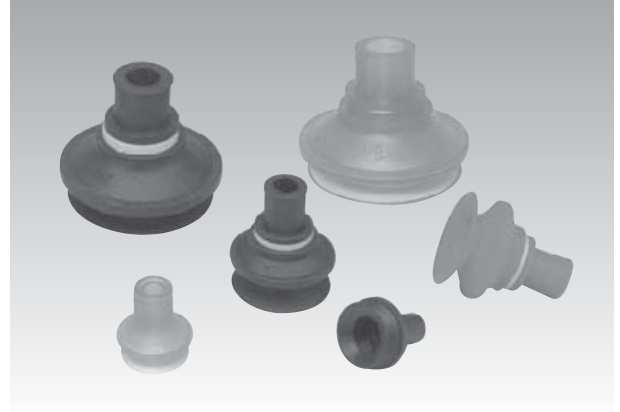


VB-M Model (Direct Fitting Bellows)

Features and Strengths

Same general advantages to that of the normal bellows cups but can be fitted directly onto a piece of pipe, thus making installation very simple and reducing pad costs to a minimum, very suitable for integration to packaging machines.



Suitable for Handling

- Cardboard
- Packaging Materials
- Thin Film Sheets
- Sheet Veneer
- Plastic Sheets

Order no.

VB30M **N** **F**
 ① ② ③

① Vacuum pad Ø

- VB20M- Ø20
- VB30M- Ø30**
- VB40M- Ø40
- VB50M- Ø50
- VB75M- Ø75

② Material

- **N** – NBR (VB20M, VB30M, VB50M)
- S – Silicon (VB20M, VB30M, VB50M)
- CS** – C. Silicon (VB20M, VB30M, VB50M)
- U – Urethane (VB20M, VB30M, VB50M)
- PU** – Poly Urethane (VB20M, VB30M, VB40M, VB50M, VB75M)

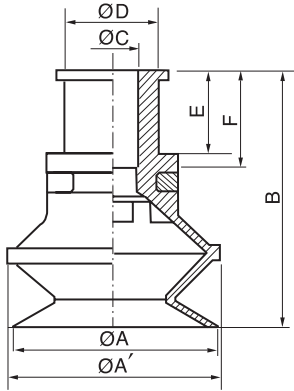
③ Filter

- | | |
|------------|---|
| no mark | – Standard |
| • F | – With filter
(VB30M, VB40M, VB50M, VB75M) |

Recommended (max.) lifting forces when using level springs

Vacuum pad model	Volume (cm ³)	Lifting Force (kg) –Perpendicular		
		–20kPa	–60kPa	–90kPa
VB20M	2.7	0.7	1.2	1.6
VB30M	10	1.5	2.1	3.9
VB40M	15	2.6	4.7	5.9
VB50M	32	3.2	7.9	10.5
VB75M	110	7.65	17.04	23.06

Dimensional Information



Model	$\varnothing A$	$\varnothing A'$	$\varnothing C$	$\varnothing D$	E	F	B
VB20M	22	24	6	10	9	10,5	28
VB30M	34	36	8,5	14	14	16	40
VB40M	42	45	8,5	14	14	16	42
VB50M	53	57	12,5	20	17	20	52
VB75M	78	83	27	36	27	–	65